

How To

Driver installation for

Windows 10, 8.1, 8, 7, Vista and XP Plus

Firmware update procedure for Windows 10

CONTENTS

| | |
|--|-----------|
| USB DRIVER INSTALLATION FOR WINDOWS SYSTEMS | 3 |
| REQUIRED ITEMS | 3 |
| 1 WINDOWS 10..... | 4 |
| 1.1 INSTALLING YOUR NEW AIS TRANSPONDER USB DRIVER ON YOUR WINDOWS 10 MACHINE. | 4 |
| 1.2 MCMURDO AIS TRANSPONDER FIRMWARE UPGRADE VIA WINDOWS 10 MACHINE..... | 6 |
| 2 WINDOWS 8 AND 8.1 | 8 |
| 2.1 INSTALLATION PROCEDURE..... | 8 |
| 2.2 DISABLING DRIVER SIGNATURE VERIFICATION ON WINDOWS 8..... | 9 |
| 2.3 DISABLING DRIVER SIGNATURE VERIFICATION ON WINDOWS 8.1..... | 10 |
| 2.4 DISABLING DRIVER SIGNATURE VERIFICATION | 10 |
| 3 WINDOWS XP, VISTA AND WINDOWS 7 | 12 |
| 3.1 INSTALLATION PROCEDURES | 12 |

USB DRIVER INSTALLATION FOR WINDOWS SYSTEMS

Make sure you have the AIS Device Driver CD in hand before following these instructions. The Driver CD is included with each of AIS unit.

Required Items

1. Driver CD (Included with the Unit). If you have a PC that does not have a CD tray you can download the Driver or Firmware from www.mcmurdomarine.com then to go "AIS Electronics" and find M10/Downloads

2. USB Cable (Included with the Unit)

3. Windows PC (Not Included)

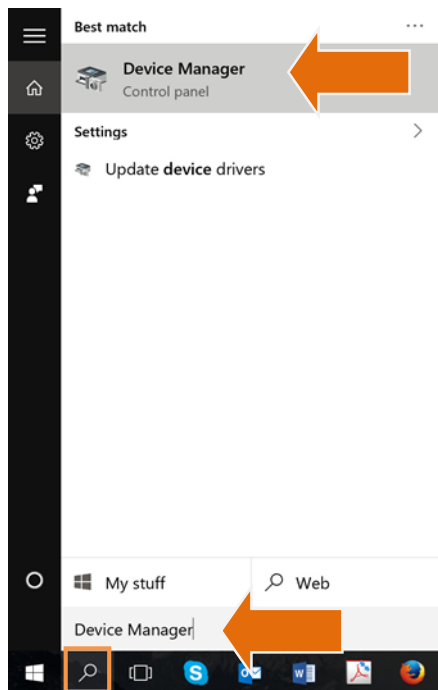
Note: AIS Device Driver supports Windows XP, Vista, Windows 7, Windows 8/8.1 and Windows 10. Depending on your Windows version, the driver installation procedure is different for each respective OS release. Please see below for step-by-step driver installation with respect to each OS release.

4. Power Supply (Not Included)

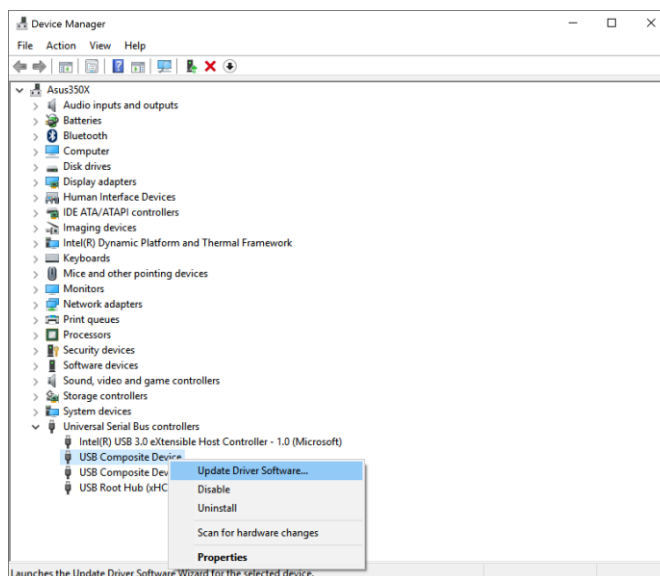
1 WINDOWS 10

1.1 Installing your new AIS Transponder USB driver on your Windows 10 machine.

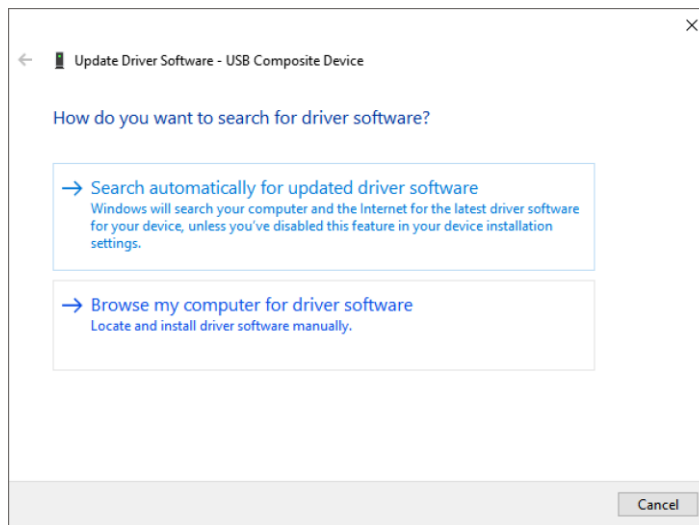
Step 1. Select the **Search** button, type **Device Manager** in the search box, and select it from the list of results.



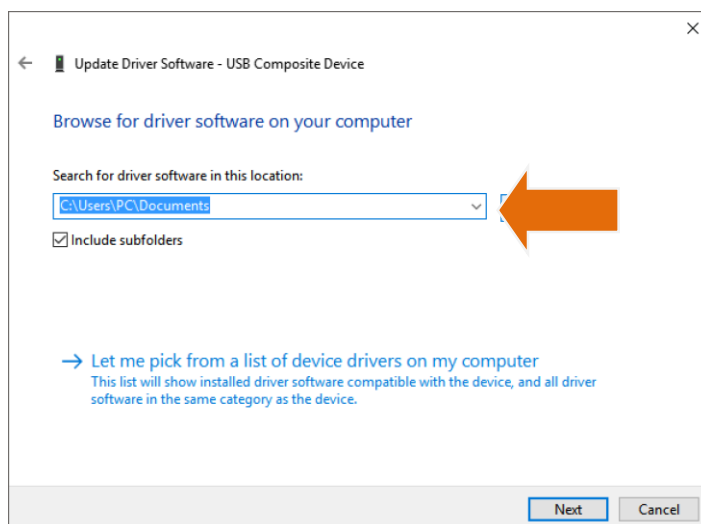
Step 2. Expand the **Universal Serial Bus controllers** right click on the device with an exclamation point, and select **Update Driver Software**.



Step 3. Select Browse my computer for driver software.



Step 4. Point the path to where the driver file is stored. Click **Next** to finalized the installation process.

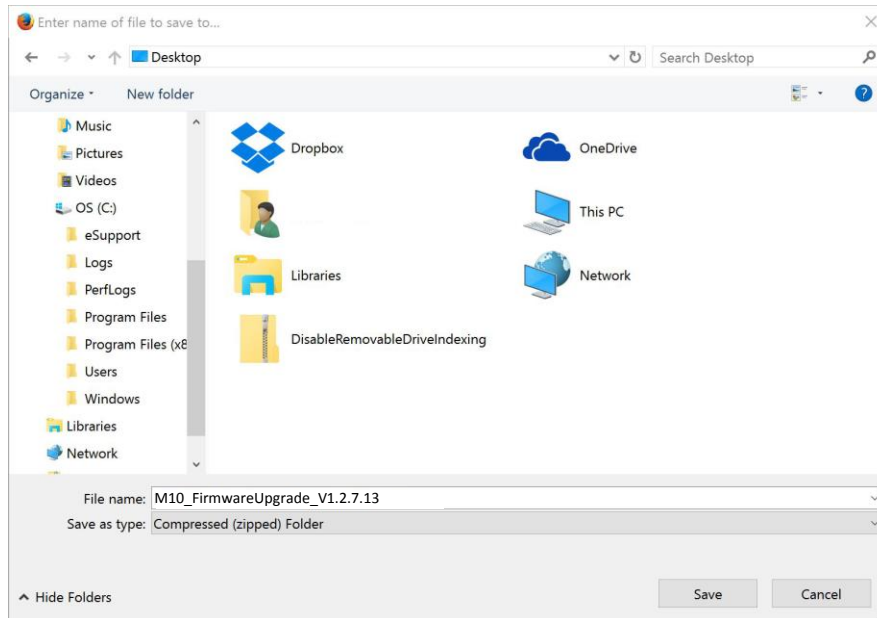


If these steps don't work, try reinstalling the driver: Open **Device Manager**, right-click (or tap and hold) the name of the device, and select **Uninstall**. Restart your PC and Windows then attempt to reinstall the driver by starting from step 1.

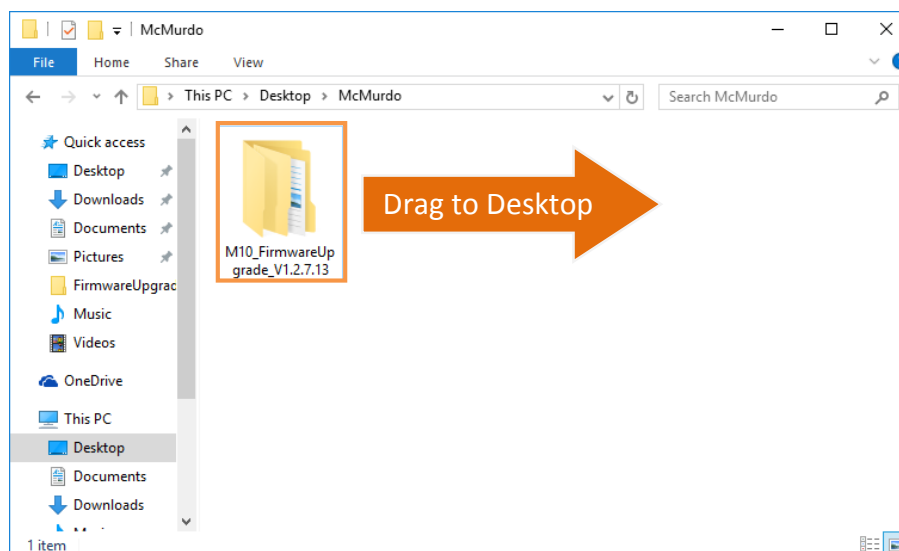
1.2 MCMURDO AIS Transponder Firmware upgrade via Windows 10 machine.

Step 1. Download the latest firmware from McMurdo website.

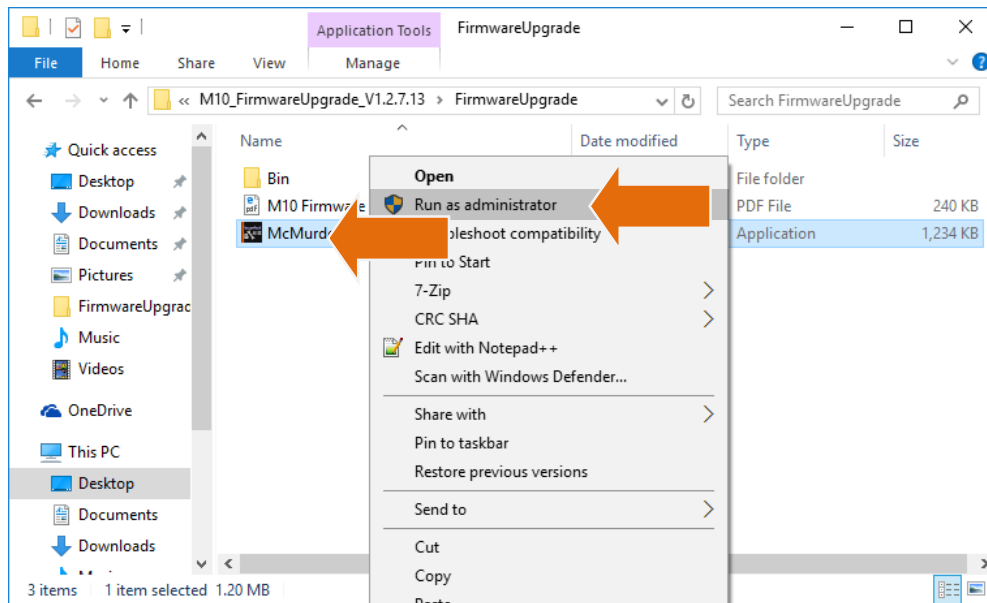
Step 2. Save the file to your PC.



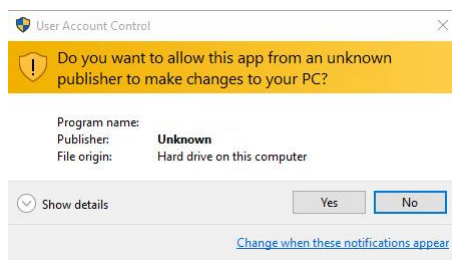
Step 3. Unzipped the file and move the unzipped file to the Desktop.



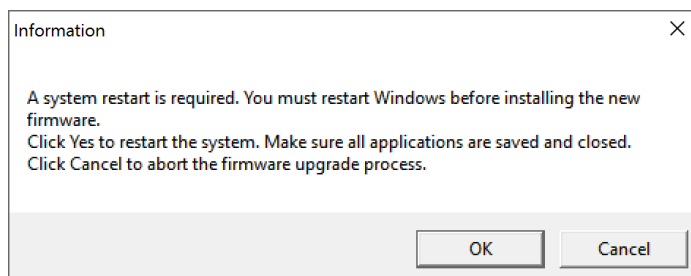
Step 4. Open the folder **M10_FirmwareUpgradexxx → FirmwareUpgrade → McMurdoaisupgrade**. Right click and select **Run as administrator**.



Step 5. A warning window will appear and simply click **Yes**.



Step 6. Restart your computer by clicking **OK**. Do not disconnect your Transponder from your PC.

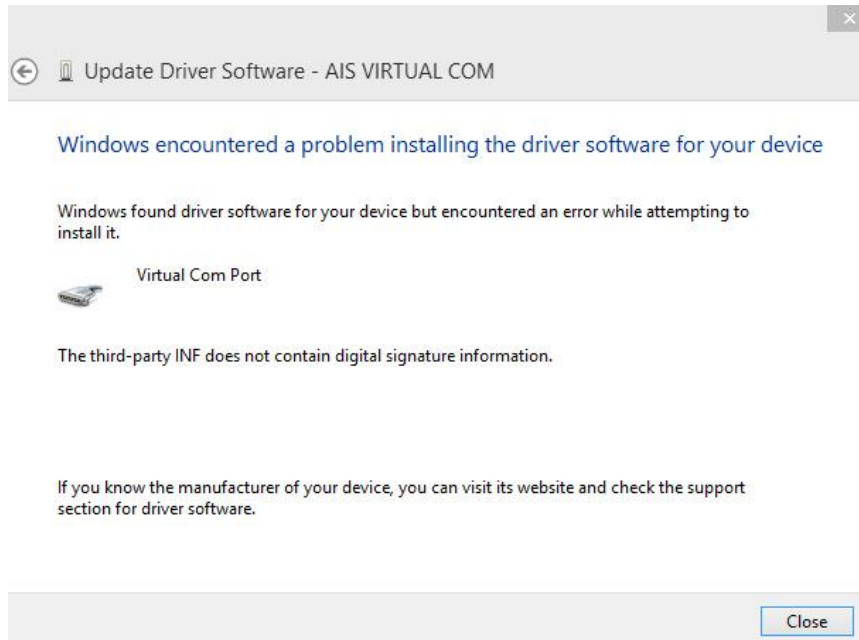


Step 7. After reboot simply follow the remaining instructions by clicking **Next** and **OK**.

Note: if you were unable to install the firmware. First, execute “**DisableRemovableDriveIndexing.reg**” (file is found in Transponder package CD) with Administrator Privileges (**Run as administrator** – by right clicking). Restart your PC and re-perform firmware upgrade from step 4.

2 WINDOWS 8 AND 8.1

When installing the USB driver of your new transponder in Windows 8/8.1, you may encounter the screen below that installation procedure is blocked due to lack of digital signature. The following instruction shows how to install the USB driver by bypassing the restrictions in Windows 8/8.1.



2.1 Installation Procedure

Please familiarize with the manual content before begin installation. Use the following recommended steps for installation.


Step 1. Insert the Driver CD to your PC CD/DVD Slot.

Step 2. Connect the AIS Device unit to a power source.

Step 3. Connect AIS Device to your Windows PC using the provided USB cable. A message bubble should appear on your PC's Taskbar.

2.2 Disabling Driver Signature Verification on Windows 8

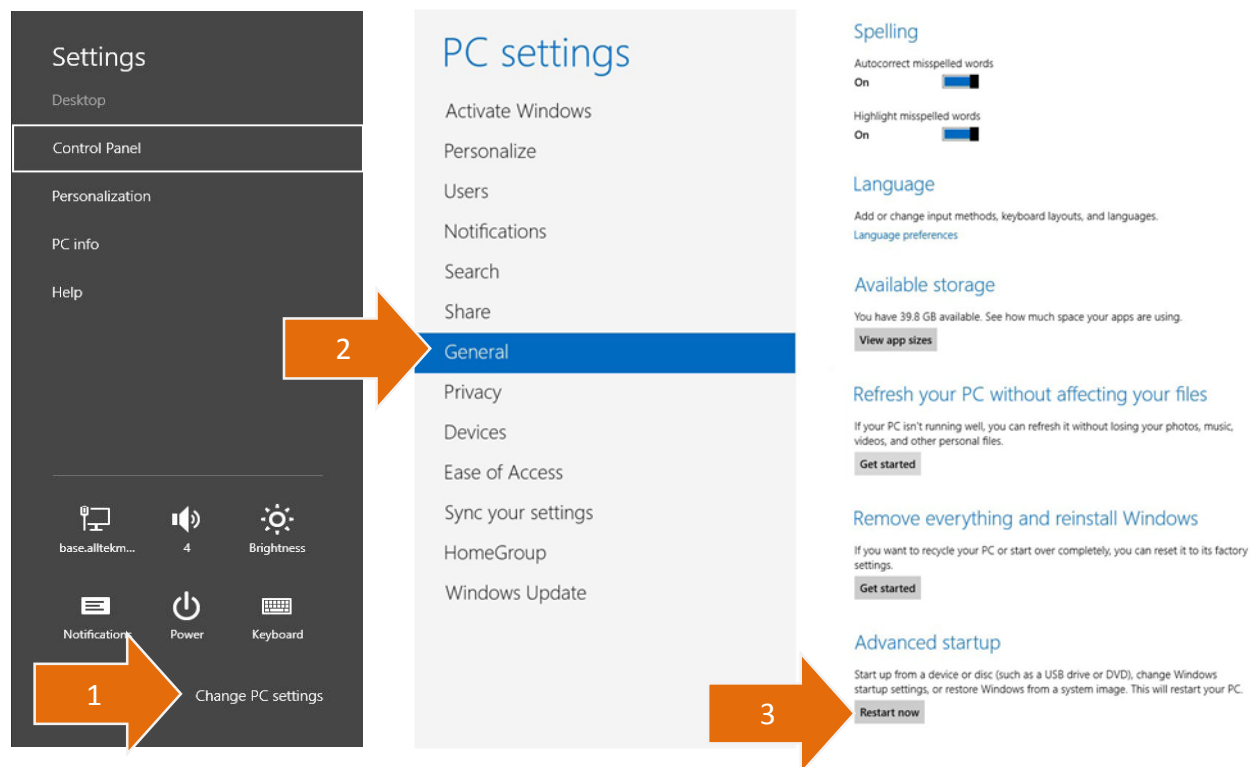
If you used Windows 8.1 please skip this section and go directly to section 1.2 Step 3.

Step 1. Press the Win () + I to launch the Charm Bar.

Step 2. Click Change PC Settings


Step 3. Click General

Step 4. On **Advanced startup** click “Restart now”



2.3 Disabling Driver Signature Verification on Windows 8.1

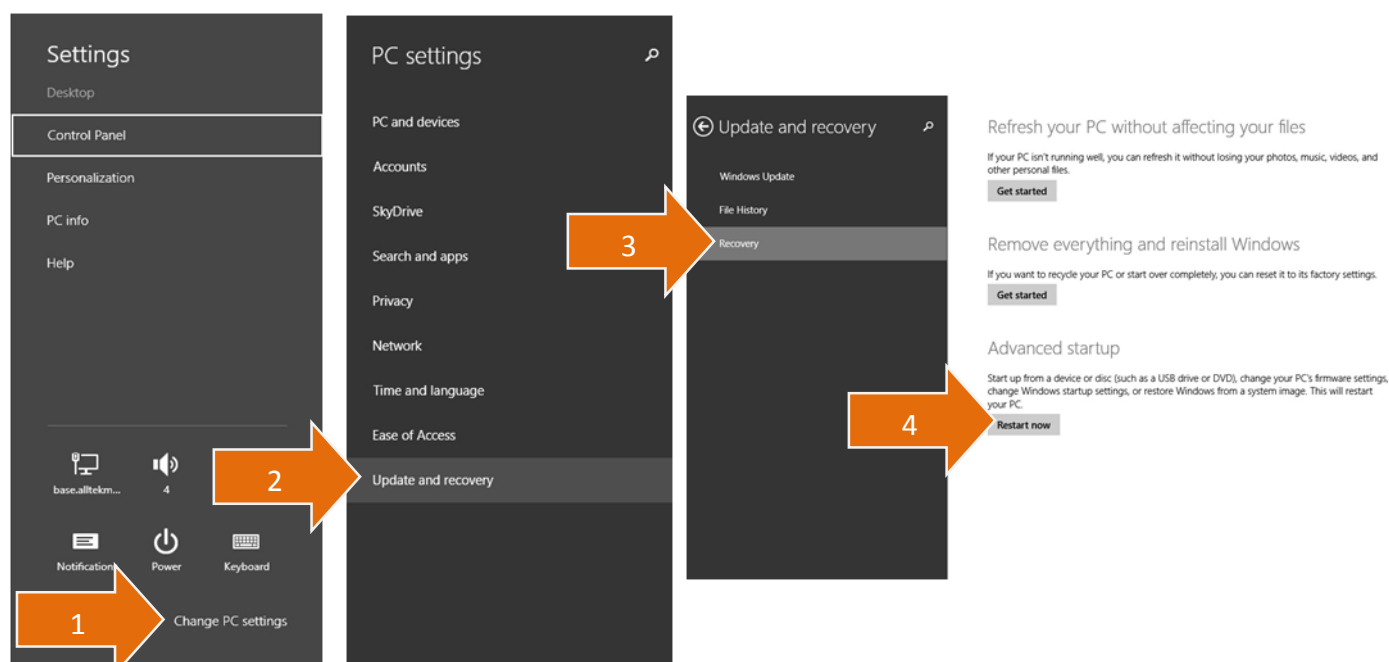
If you used Windows 8 please skip this section and go directly to section 1.2 Step 4.

Step 1. Press the Win () + I to launch the Charm Bar.

Step 2. Click Change PC Settings

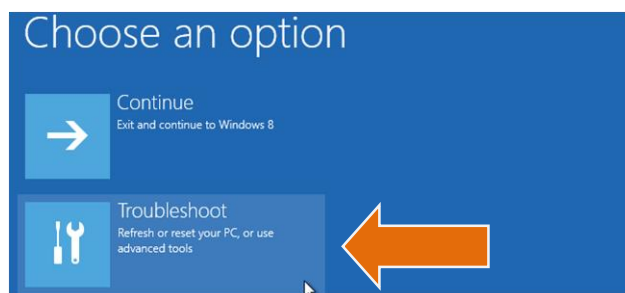
Step 3. Click Update and recovery

Step 4. Within Update and recovery go to **Recovery** Section and on **Advance startup** click "Restart now"

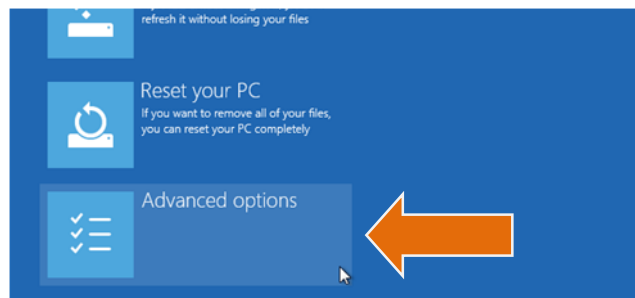


2.4 Disabling Driver Signature Verification

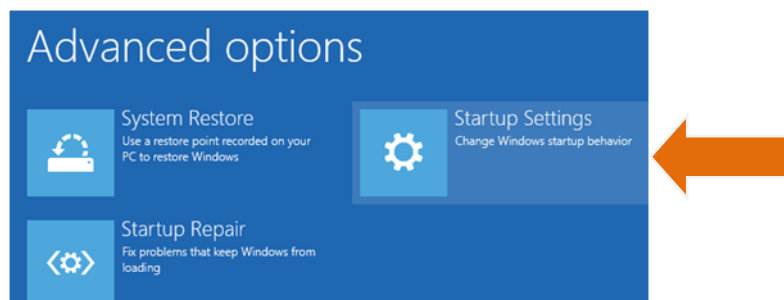
Step 1. Once your Computer is rebooted, click **Troubleshoot** option



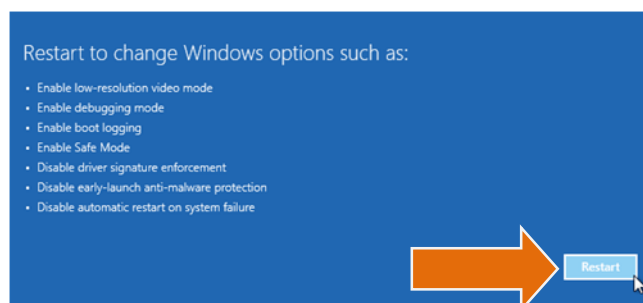
Step 2. Click Advance options



Step 3. Then Startup Settings



Step 4. And **Restart** again



Step 5. After the reboot is done you will be presented a list of **Startup Settings** that you can change. Click on **“Disable driver signature enforcement”**. To choose this setting, you must press the **F7** key to continue booting to Windows 8/8.1 with digital sign enforcement disabled.



Step 6. Now you can Install the Driver.

3 WINDOWS XP, VISTA AND WINDOWS 7

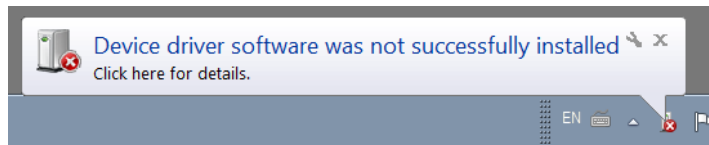
3.1 Installation Procedures

Please familiarize with the manual content before begin installation. Use the following recommended steps for installation.

Step 1. Insert the Driver CD to your PC CD/DVD Slot.

Step 2. Connect the AIS Device unit to a power source.

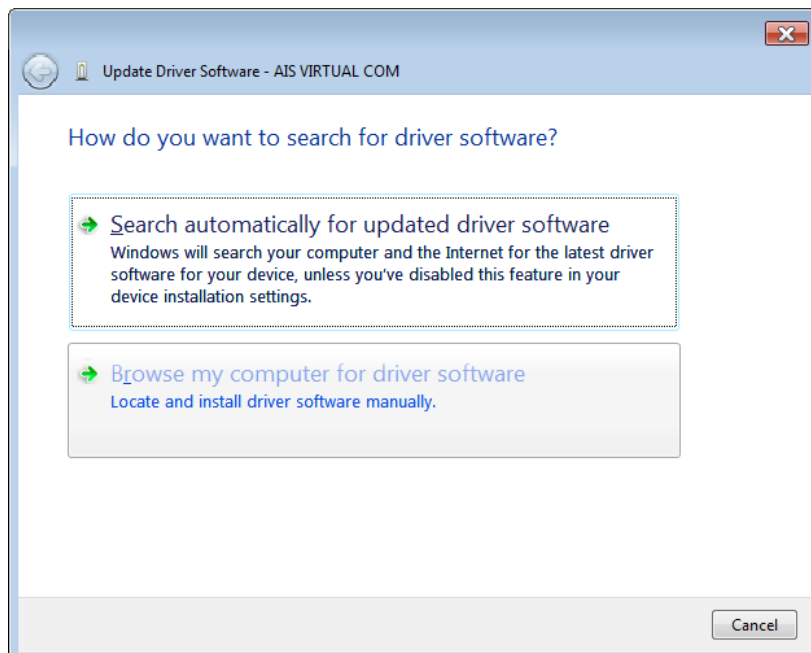
Step 3. Connect AIS Device to your Windows PC using the provided USB cable. A message bubble should appear on your PC's Taskbar.



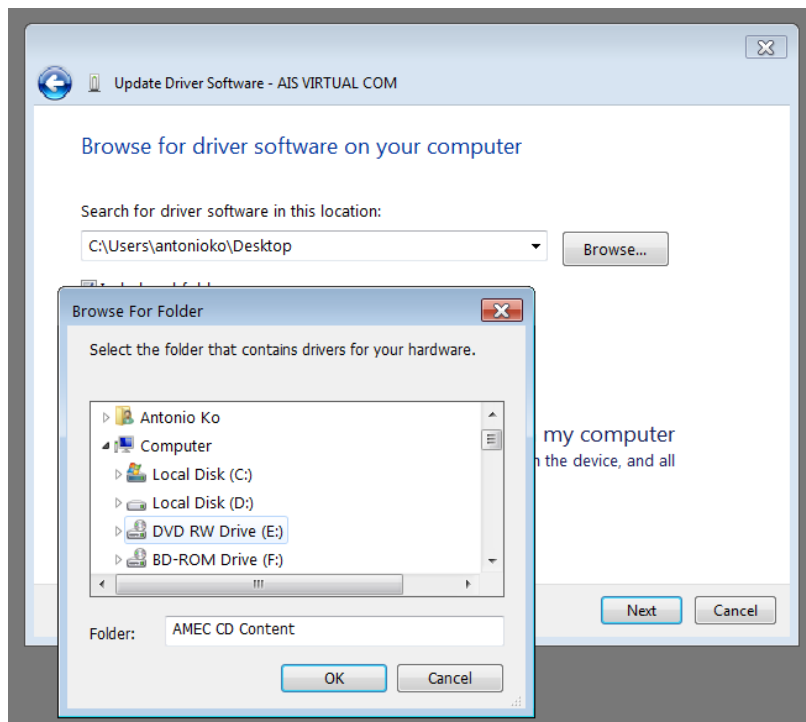
NOTE: If the new Hardware Found Wizard popup does not appear when you plug in AIS Device, go into Device Manager and look for the interface. In Windows XP, Vista or 7, you can typically find the Device Manager by RIGHT-CLICKING on **Control Panel** then select **Device Manager**. Your AIS Device USB Interface should be under Universal Serial Bus (USB) Controllers or under Other Devices. Please refer to Step 10 in the instructions below.

Step 4. Click the Taskbar.

Step 5. A Window like below will appear.

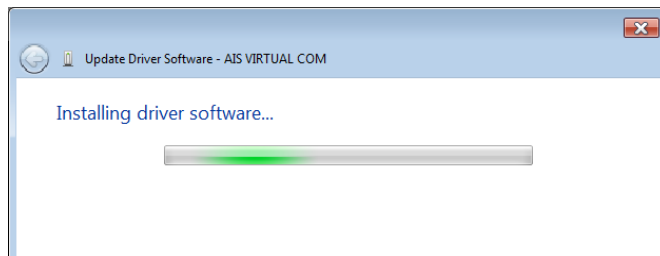


Step 6. Click on **“Browse”** my computer for driver software. The following dialog should appear:

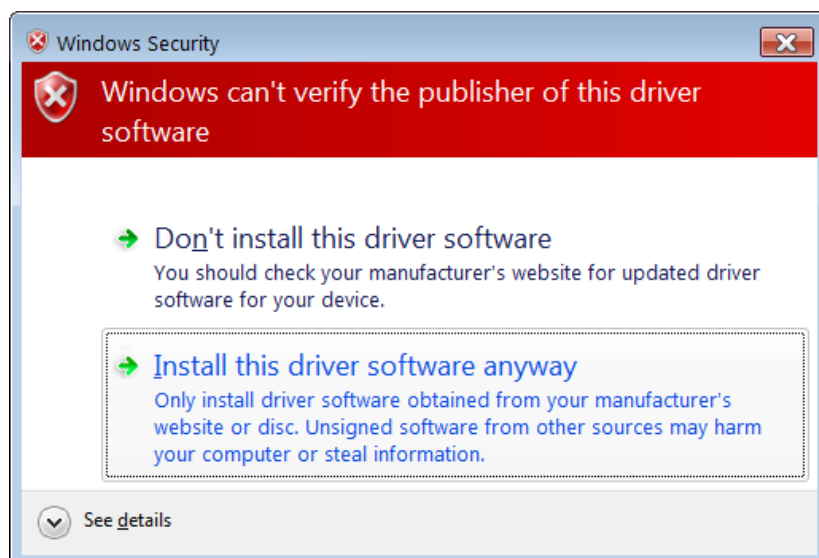


Select your PC CD/DVD slot where the CD Driver is located and then click OK.

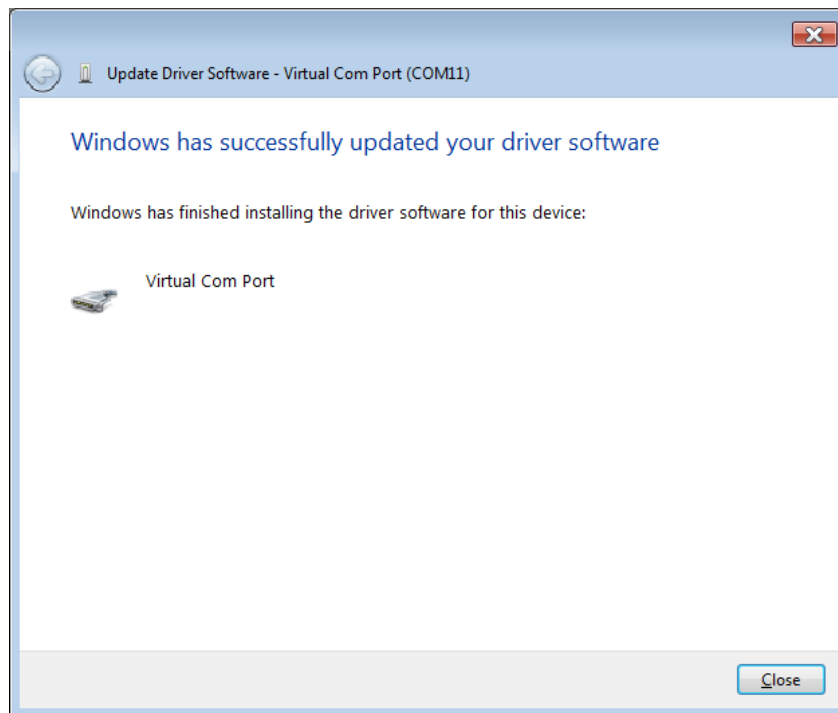
Step 7. The installation should start shortly.



Step 8. If the following window appear simply Click on **“Install this driver software anyway”** to continue the installation.

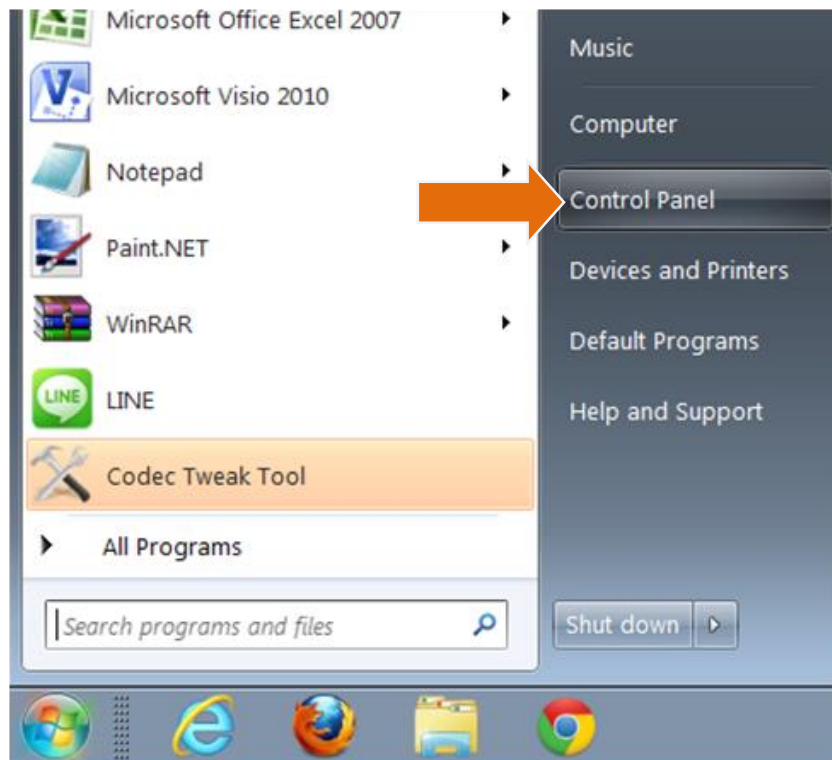


Step 9. The following window will appear when the Driver is successfully installed.

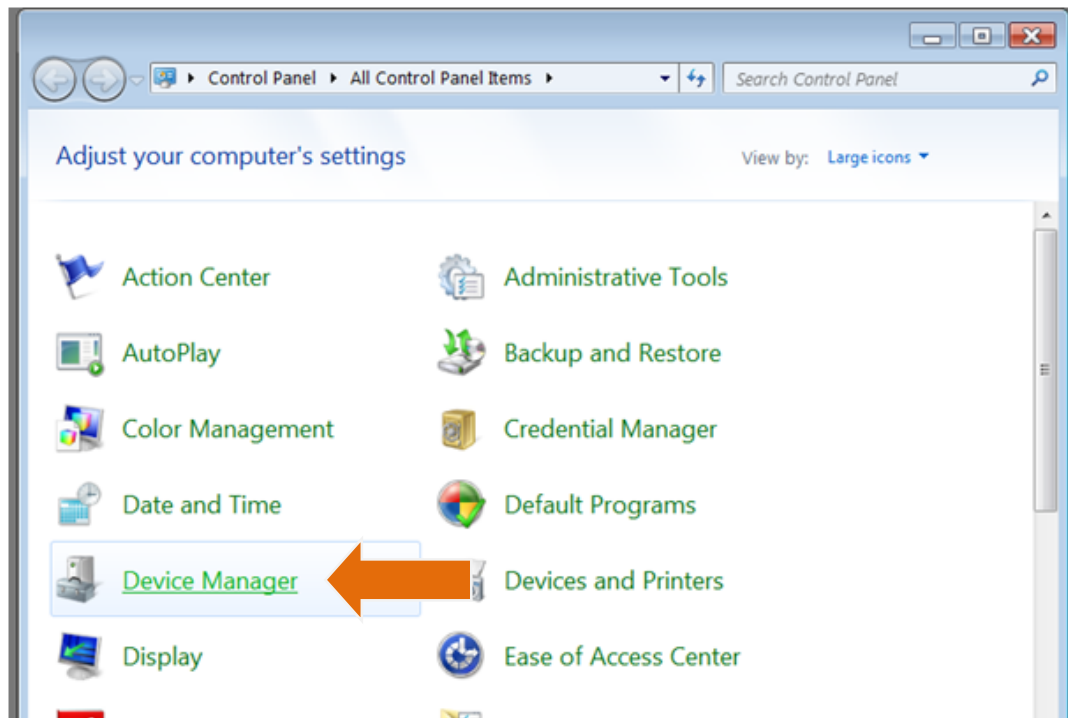


If the new Hardware Found Wizard popup does not appear when you plug in AIS Device, please follow instructions below.

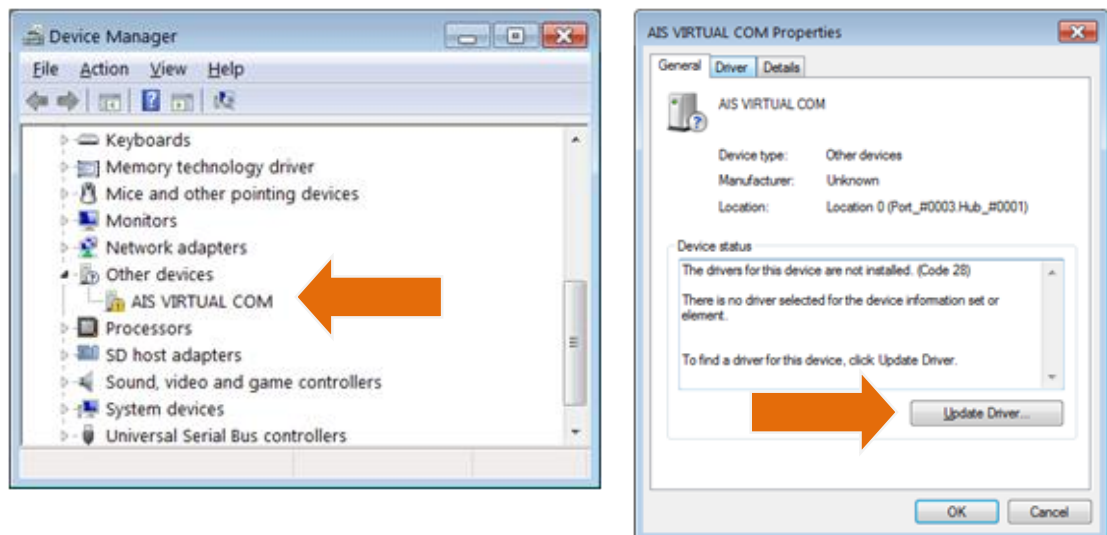
Step 10. Go to Start and click on **Control Panel** as shown in the screenshot on the right.



Step 11. The **Control Panel** Window will appear. Please select **Device Manager** Setting as shown in the screenshot below.



Step 12. Now, simply select the AIS Device and right click on it then click **Update Driver Software** as shown in the screenshot below.



Step 13. Please return to process step 6 to continue with the Driver Installation.